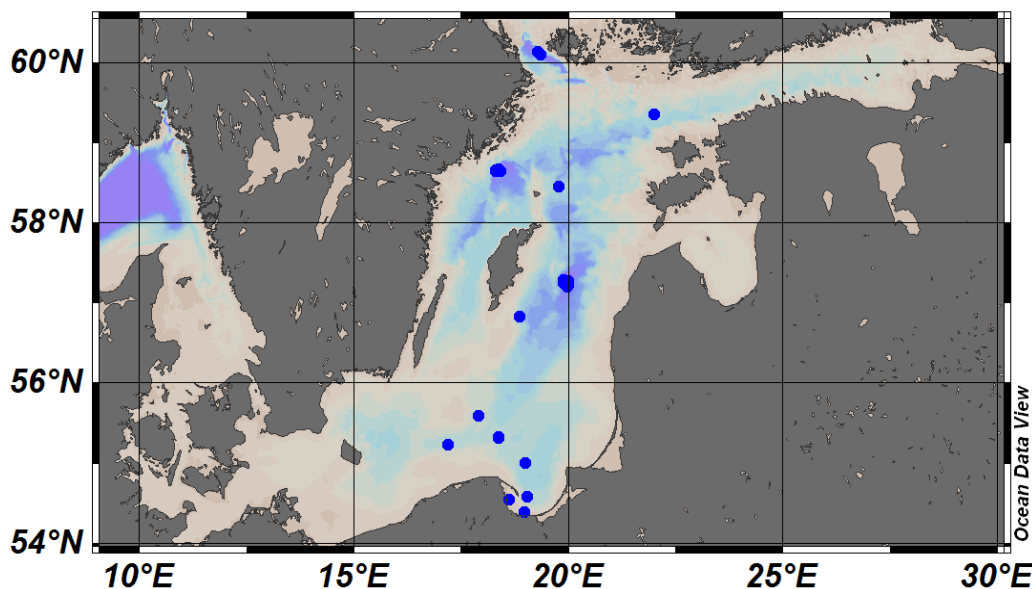


## Poland

### *Meetings*

- 2nd Cruise planning meeting (September 15-16 – SOPOT, Poland). Participants: Jacek Beldowski, Martin Frank, Gideon Henderson, Johan Ingri, Jaromir Jakacki, Karl Kulinski, Janusz Pempkowiak, Kimberly Pyle, Robert Goodard, Till Oehler, Beata Szymczycha, Michael Staubwasse, Sussanne Bauer, Susann Henkel, Daniel Whiter. Meeting included an outline of GEOTRACERS goals and activities, and detailed planning of Baltic GEOTRACERS cruise in November



*Figure 10. Major sampling stations location.*

### *Cruises*

- Cruise onboard R/V Oceania took place in November 3-13. Three main scientific targets were foci for the cruise:
  - 1) Trace element and isotope (TEI) impact of the reducing conditions in the deep basins of the Baltic,
  - 2) TEI fluxes from marginal Baltic basins (e.g. Bothnia Gulf) and chemistry on mixing,
  - 3) TEI fluxes out of the Baltic to the Atlantic.

Scientists from 6 institutions from UK, Germany, Sweden and Poland have performed the research. Cruise track included 10 major stations with high resolution Pump CTD redoxcline profiling, and a number of minor stations for the monitoring of physical parameters variability between stations. Major stations are presented in Figure 10.

### *New results*

- Data collected during the NOV 11 Oceania Cruise are now being analyzed. At all the profiles collected with high res, agglomeration of particles was observed above the Halocline. Based on O<sub>2</sub> and Nutrient profiles, dominating processes behind that behavior will be determined.

Submitted by: Jacek Beldowski